



BJCPA

Birmingham-Jefferson
County Port Authority

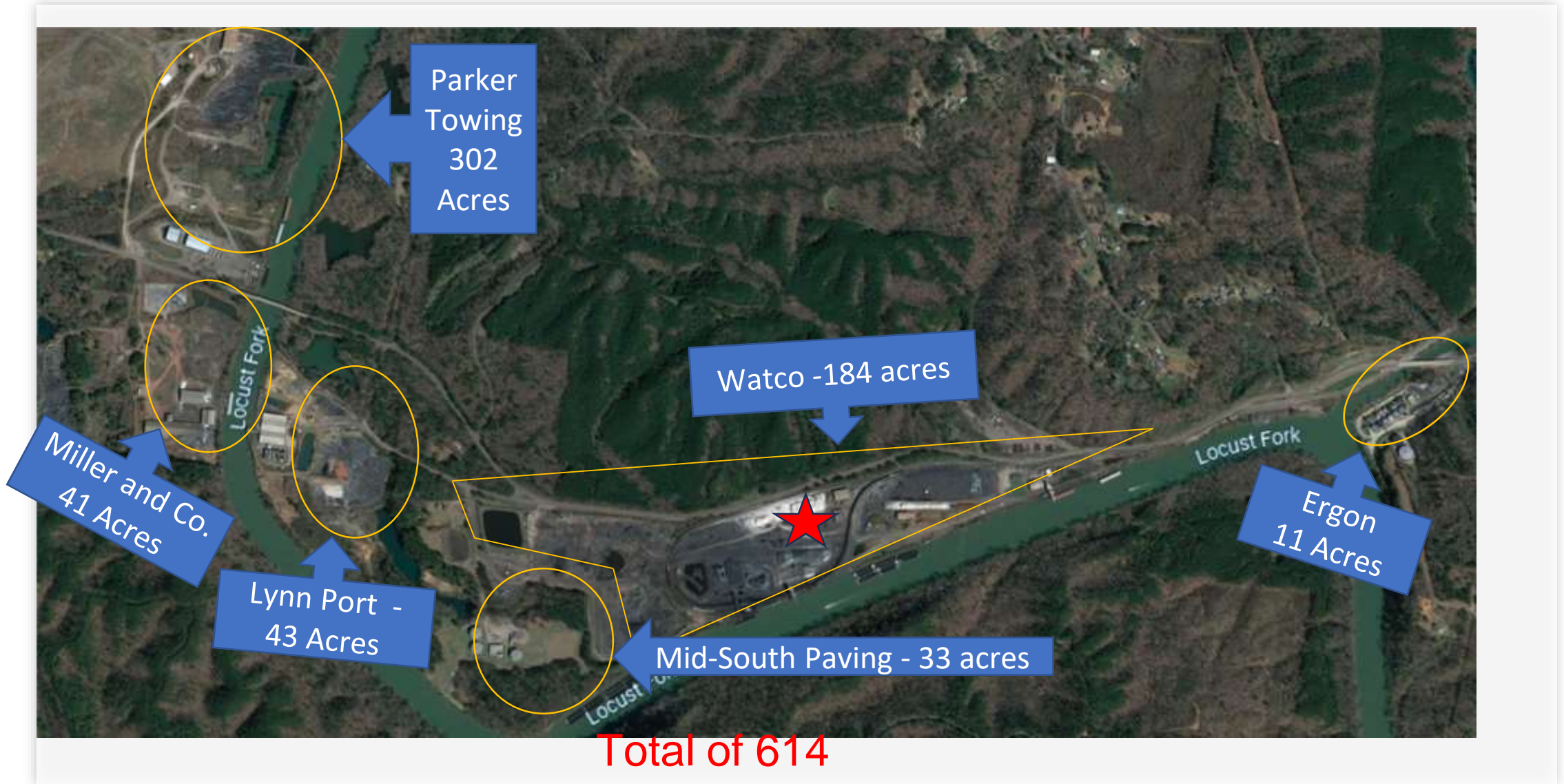
*Presentation for US Senator Tommy Tuberville's Office
February 2024*

History

- The Inland waterway is located on M-65, the Locust Fork branch of the Black Warrior River
- Developed in 1920 by Port Birmingham Company
- The Black Warrior is navigable from the Gulf of Mexico to Chicago, Illinois.
- Birmingport has been primarily utilized by the steel, coal, and raw material industries.
- Birmingport was annexed into Birmingham City Limits in 1986.
- In 2006, Port Birmingham (one terminal) was handling 12 – 13 million tons of throughput.
- The Birmingham-Jefferson County Port Authority (BJCPA) was created by the City of Birmingham in 2016.
- The BJCPA is governed by five board members two appointed by the City of Birmingham, two appointed by Jefferson County, and one joint appointment.
- The BJCPA is a quasi-government with bonding issuance authority and can operate anywhere within the Jefferson County footprint.



Birminghamport's Six Terminals



**Total of 614
Acres**

Current Economic State (2021)

2.2
MILLION TONS



1450
Barges



21,000
Railcars



235 Semi-trucks
Daily

87,000
Semi-Trucks



147
Direct Jobs



\$7.9
Million Annual Payroll



Total Economic Impact (2024)

Direct Impact of 1450 Barges | Annual Tonnage = 2.1 million | 18-Wheelers = 87,000 | Railcars = 15,000

5% of
Capacity

\$128

MILLION



Total
Economic
Impact

1,486

(FTE) Jobs



Employment
Impact

70% Leakage =
\$23,000,000

\$86.7

MILLION



Total
Payroll
Impact

\$1 : \$4

Investment



Region's
Return on
Investment

- City Tax Revenue - \$1,500,000
- State Tax Revenue - \$1,300,000
- County Tax Revenue - \$511,000

FTE = Full-time Equivalent

Jobs

Birmingham Metro Area Competitiveness



Air
Cargo
Shipp
g



- 1 Day Rail Delivery
- 2 Day Rail Delivery
- 3 Day Rail Delivery

Rail Delivery Time Demographics				
2015 Demographics	U.S. Total Population	1 Day	2 Day	3 Day
Population	318,536,439	19,112,186	89,190,203	165,638,948
% of U.S. Total	100%	6%	28%	52%
Households	120,746,349	7,244,781	33,806,978	62,788,101
% of U.S. Total	100%	6%	28%	52%



- 1 Day Truck Trip
- 2 Day Truck Trip



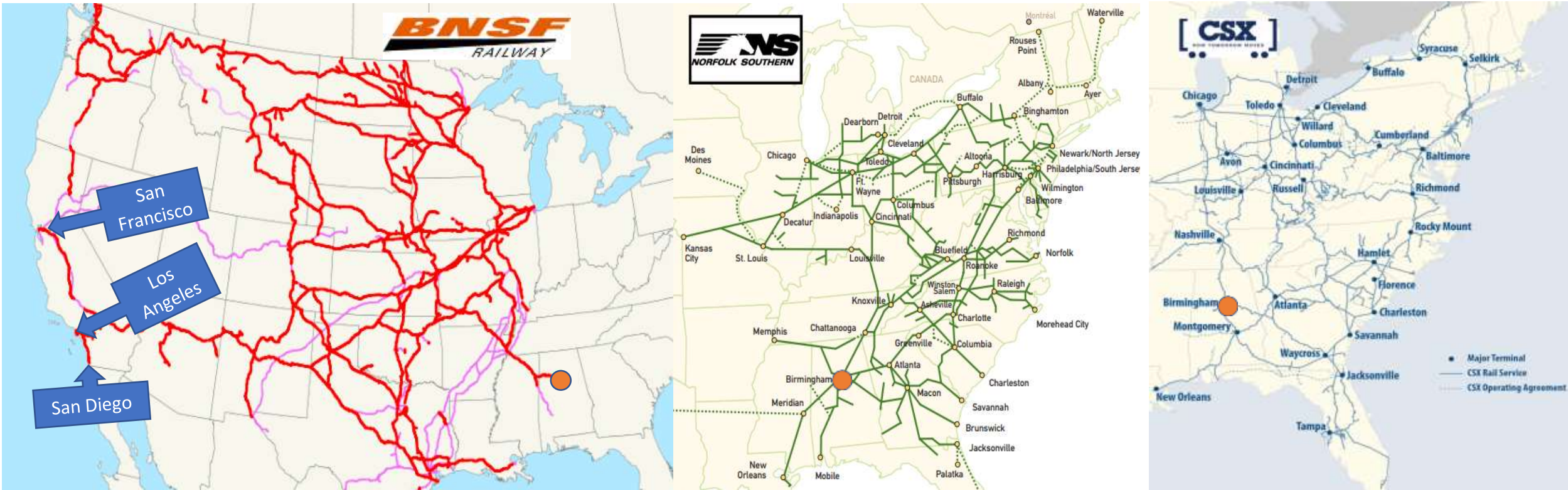
Freight Drive Time Demographics			
2015 Demographics	U.S. Total Population	1 Day	2 Day
Population	318,536,439	104,944,000	248,458,422
% of U.S. Total	100%	33%	78%
Households	120,746,349	39,846,295	94,182,152
% of U.S. Total	100%	33%	78%

Source: BBA, using Cushman and Wakefield data



Note: Drive times are calculated based on an 11-hour drive day at posted speeds.

Birminghamport Rail Connectivity



How can the port increase volume?



Inflation Reduction Act 2022

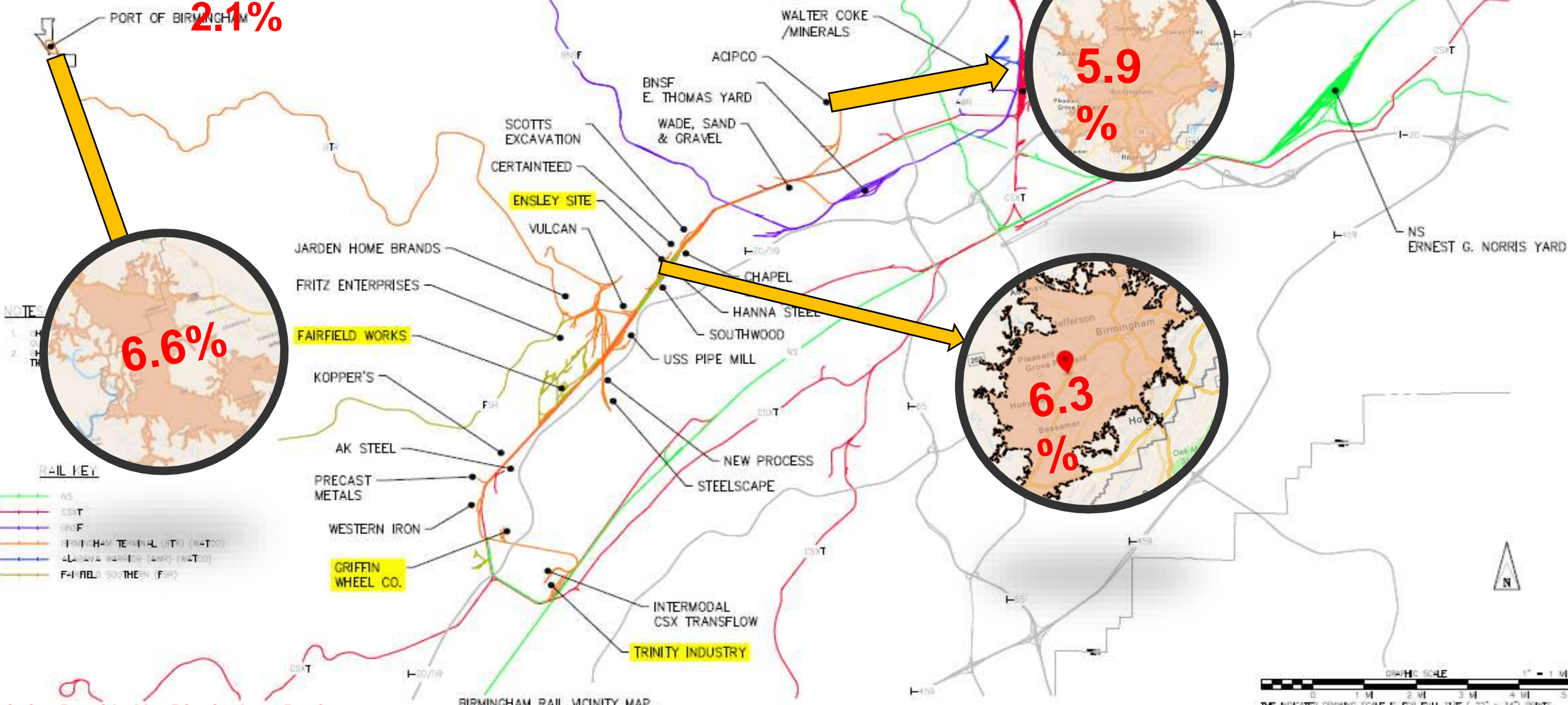
- Nearshoring
- Advance/Light Manufacturing
- More Efficient Manufacturing
 - Relocation of Suppliers
 - More Volume
 - More Jobs
 - More Tax Revenue
 - Higher Wages (Potential)
 - More Disposable Income

Potential Companies Beneficiaries

- ACIPCO
- US Steel
- US PIPE
- NUCOR
- M&B Hangers

Jefferson County's Rail

State Unemployment Rate
2.1%



NOTES:
1. H
2. H
TR

RAIL KEY

- NS
- CSXT
- BNSF
- BIRMINGHAM TERMINAL (BTM) (H&TOD)
- ALABAMA WARRIOR (AWR) (W&TOD)
- FAIRFIELD SOUTHERN (FSN)

BIRMINGHAM RAIL VICINITY MAP

GRAPHIC SCALE 1" = 1 MI
0 1 M 2 M 3 M 4 M 5 M
THE INDICATED DRAWING SCALE IS FOR FULL SIZE (22" x 34") PRINTS.
USE THE GRAPHIC SCALE FOR DIFFERENT PAPER SIZES.

Future Project – Blight Removal/Revitalization



Prime Location Alert!!

- 26 Acres
- Access to rail
- Proximity to interstate
- Available workforce
- Growing Alabama Tax Credit



ADECA Grant- Warehouse Project



- Public-Private-Partnership P3 Agreement
 - \$2.6 Million Development
- First Revenue Producing Assets
 - Lease Value \$1.4 Million
- Flagship Project
 - BJCPA Matched \$259,000
- Attract New Customers
 - Additional Raw Materials
 - Eliminate ~ 1600 18-wheelers (Annually)
 - Four Trucks Daily
 - Add ~ 24 barges a year
 - Increase the river's tonnage by 36,000 tons

Pending Fire Hydrant Cost ~\$188,000

BIRMINGHAM - JEFFERSON COUNTY PORT AUTHORITY WAREHOUSE FACILITY



MULGA, ALABAMA



POST- COVID Supply Chain Study



CONDUCTING PARTIES



Funded By:



PARTICIPANTS



And Others...

POST- COVID Supply Chain Study Results

Figure 3: How familiar are you with the existence of Birmingham Port

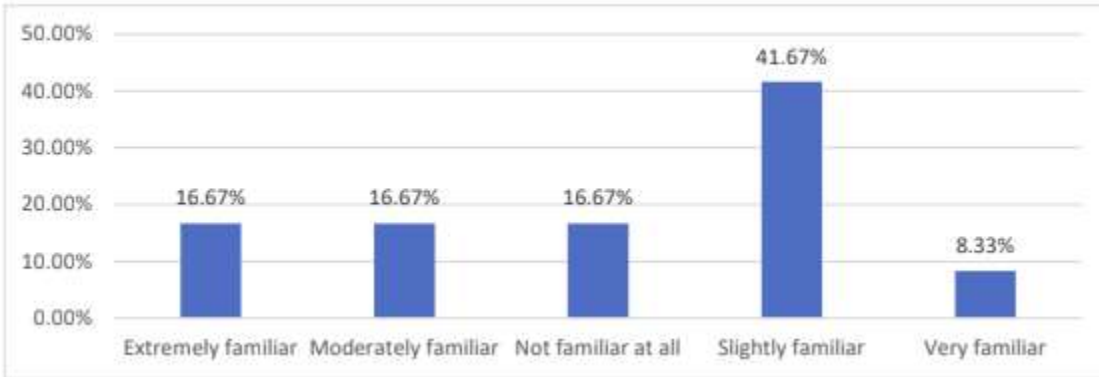
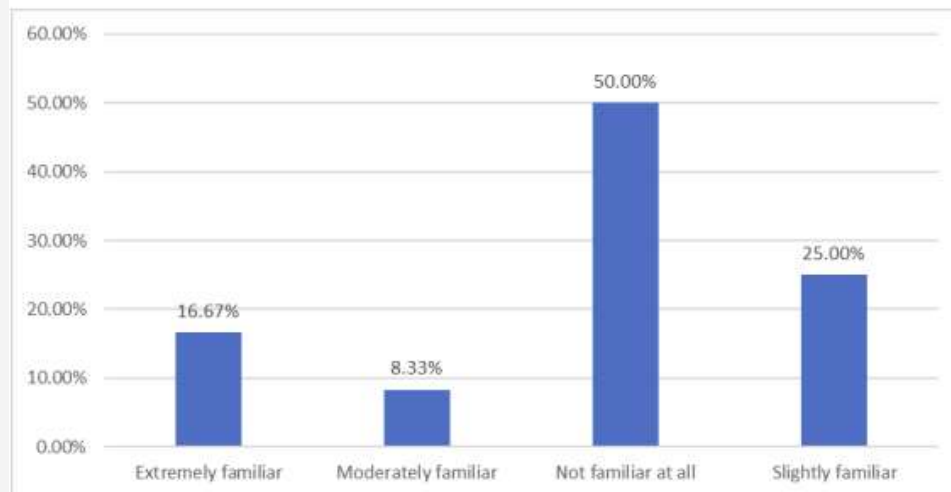


Figure 4: How familiar are you with the services that the Birmingham Port can provide for your business?



Top Three Challenges

1. Lack of Awareness
2. Lack of Commodities
Diversity
3. Lack of Maritime
Certifications



Forty Percent Capacity | 16 Millions Ton

Previous \$128 Million

\$512
MILLION



**Total
Economic
Impact**

Previous \$86.7
Million

\$346.8
MILLION



**Total
Payroll
Impact**

Previous 1,486

5,944
(FTE) Jobs



**Employment
Impact**



Growing Alabama Tax Credits

Alabama taxpayers who make cash contributions to EDOs for approved qualifying projects receive a Growing Alabama tax credit that can offset up to 50% of the following tax types:

- Income tax
- State portion of the financial institution excise tax
- Insurance premium tax
- State utility license tax

Funding is capped at \$20 million per calendar year.



MADE IN
ALABAMA

1. Site Work and Public Infrastructure (must be owned by EDO)
 1. Industrial Sites
 2. Industrial or Research Parks
 3. Low-income Community Census Tracts
2. Capital Improvements and Economic Development Activities
 1. Inland Ports
 2. Intermodal Facilities

International Port Birmingham



Australia



Germany



Japan



Ireland



Austria



Saudi Arabia



Switzerland



Colombia



Belgium



Mexico



Spain



China



Canada



South Korea



U.K.



Finland

**MADE IN
ALABAMA**

“This is a promising sign that demand for Alabama-made goods and services remains strong, and that Alabama has an integral role to play in the worldwide recovery.”

Alabama businesses exported to 189 countries last year, reflecting the vital connection that the state’s high-quality, in-demand products have to the global economy.

The Top 5 destinations were:

- Germany — \$3.7 billion (up 65.7%)
- Canada — \$3.4 billion (up 15.6%)
- China — \$3.2 billion (up 1.6%)
- Mexico — \$2.5 billion (up 35%)
- South Korea — \$921.7 million (up 47.3%)

Rounding out the 10 top destinations for 2021 Alabama exports were Japan, Belgium, the United Kingdom, Australia and Brazil.

ADECA Grant Economic Impact



Table 13: Total Economic Impact of the State Grant for Inland Waterway Improvement

	Clark County	Morgan County	Lauderdale County	Jefferson County	Greene County	Sumter County	Total
Grant Amount	\$289,248	\$2,288,090	\$550,000	\$840,000	\$437,076	\$600,000	
Total Employment Impact	4	35	9	12	5	7	72
Direct Employment	3	23	6	8	4	6	50
Indirect Employment	1	13	3	3	1	1	22
Total Payroll Impact	\$185,553	\$1,748,215	\$415,525	\$568,218	\$243,626	\$363,300	\$3,524,437
Direct Payroll	\$144,624	\$1,144,045	\$275,000	\$420,000	\$218,538	\$300,000	\$2,502,207
Indirect Payroll	\$40,929	\$604,170	\$140,525	\$148,218	\$25,088	\$63,300	\$1,022,230
Total Economic Impact	\$397,864	\$4,739,620	\$794,776	\$1,281,442	\$544,939	\$912,437	\$8,671,078
Estimated Retail Sales Impact	\$263,276	\$3,206,274	\$561,181	\$857,796	\$342,016	\$585,442	\$5,815,985



BJCPA
Birmingham-Jefferson
County Port Authority

www.birminghamport.org



BJCPA

Birmingham-Jefferson
County Port Authority

www.birminghamport.org



2121 Rev. Abraham Woods Jr. BLVD., Suite 1220, Birmingham, AL 35203

How can you help?



Support

- Port Infrastructure Development Program (PIDP) Grant

Funding

- Reissue the Inland Port Grant
 - Studies
 - Infrastructure
- Jefferson County's Continual Support